



portfolio

content

first year

year 2030\_ noah's ark P2

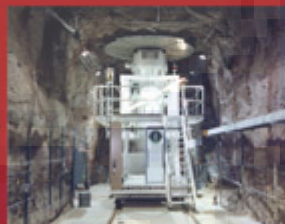
reMAKING TW\_ empty houses & diused farms P4

.Chang Chung-yi.....

DESIGN STUDIOS first year



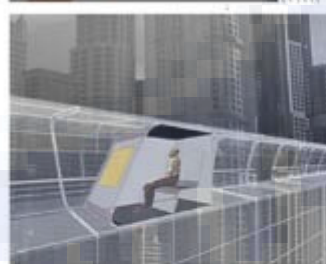
This project is to explore the future life in year 2030, and building a noah's ark that things reserved in can be release to evolve a new civilization while fatal disaster hit the earth. in the begining,the survival units (i.e .in the future, the nuclear test field will no longer be experiment nuclear bomb,instead, it's underground lab will be restoring algae,which is the simplist cell in the world, and also the most adaptable life form in the world.) release it's argae to the sky,then the life circle start to evolve again,and the noah's ark reserved the knowledge of human,when the new civilization mature,noah's ark can led them to understand the pass knowledge and history of mankind.

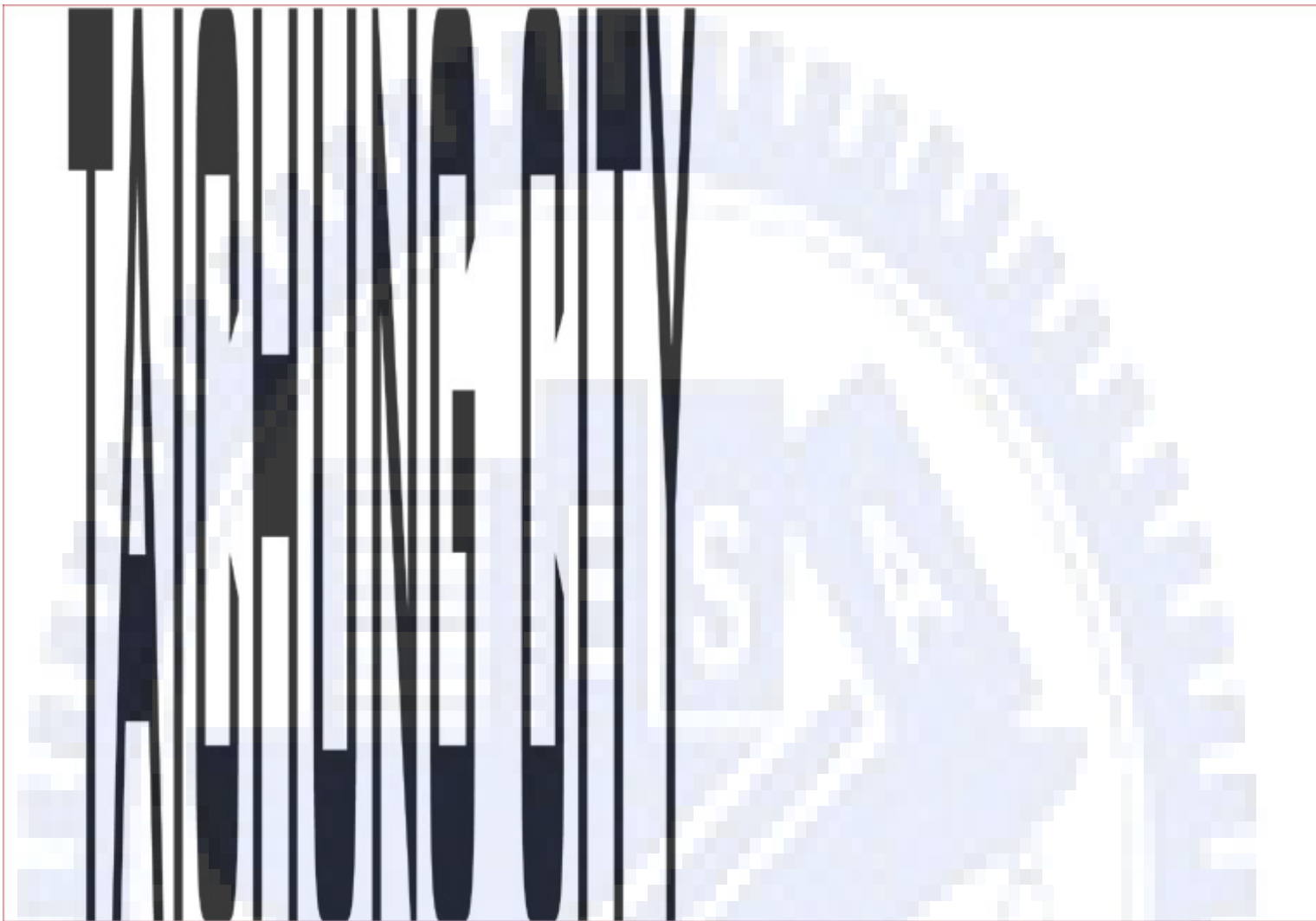


YEAR 2030

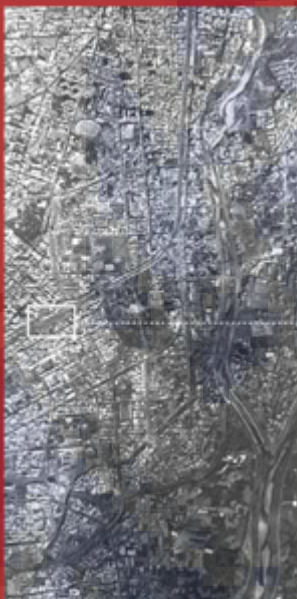


advise professor : Leslie Shih





DESIGN STUDIOS first year



- 1.density--  
6070 man/km2
- 2.saturation of population  
74.29%  
(NO.4 of taiwan city.)
- 3.owning rate of house--  
74.8%  
(lowest in this country)
- 4.rate of empty house--  
24%  
(highest in this country)
- 5.public facilities--  
12%

by re-examing the condition of TAIWAN industrial and economic,we try to reprogram the old disused empty house of TAICHUNG city in to an new open space for city such as park,sport field,parking place, public facility...  
and on the other hand,yhe county call MIAOLI is facing a totally different situation,the wasted farms can only be recover into the nature,by multiprogram the system of water,highway,biogeocenosis.





縣市別	都市人口總數			都市總建築面積		
	總數	佔比	年增率	總數	佔比	年增率
總計	10,170,000	100.0%	0.2%	1,100,000,000	100.0%	0.2%
台北市	2,670,000	26.3%	0.1%	300,000,000	27.3%	0.1%
新北市	3,250,000	32.0%	0.3%	380,000,000	34.5%	0.4%
台中市	2,100,000	20.7%	0.2%	250,000,000	22.7%	0.2%
台南市	1,800,000	17.7%	0.1%	200,000,000	18.2%	0.1%
高雄市	1,750,000	17.3%	0.1%	170,000,000	15.5%	0.1%
基隆市	400,000	3.9%	0.0%	50,000,000	4.5%	0.0%
新竹市	400,000	3.9%	0.0%	50,000,000	4.5%	0.0%
嘉義市	300,000	3.0%	0.0%	40,000,000	3.6%	0.0%
屏東市	300,000	3.0%	0.0%	40,000,000	3.6%	0.0%
宜蘭市	200,000	2.0%	0.0%	30,000,000	2.7%	0.0%
花蓮市	200,000	2.0%	0.0%	30,000,000	2.7%	0.0%
台東市	100,000	1.0%	0.0%	15,000,000	1.4%	0.0%
澎湖市	100,000	1.0%	0.0%	15,000,000	1.4%	0.0%
金門市	100,000	1.0%	0.0%	15,000,000	1.4%	0.0%

空閒住宅數6990416-5507291=1232128宅  
空屋率=18%  
佔都市建築面積=15%

number of empty houses in year 2002  
6990416-5507291=1232128  
rate=18%  
it take 15% of urban building area

縣市別	總數	佔比	年增率	總數	佔比	年增率
總計	4,309,787	100.0%	-0.5%	723,452	100.0%	-0.5%
台北市	1,000,000	23.2%	-0.1%	150,000	20.7%	-0.1%
新北市	1,200,000	27.8%	0.1%	200,000	27.6%	0.1%
台中市	800,000	18.6%	0.0%	120,000	16.6%	0.0%
台南市	600,000	13.9%	0.0%	80,000	11.1%	0.0%
高雄市	500,000	11.6%	0.0%	70,000	9.7%	0.0%
基隆市	100,000	2.3%	0.0%	15,000	2.1%	0.0%
新竹市	100,000	2.3%	0.0%	15,000	2.1%	0.0%
嘉義市	100,000	2.3%	0.0%	15,000	2.1%	0.0%
屏東市	100,000	2.3%	0.0%	15,000	2.1%	0.0%
宜蘭市	100,000	2.3%	0.0%	15,000	2.1%	0.0%
花蓮市	100,000	2.3%	0.0%	15,000	2.1%	0.0%
台東市	100,000	2.3%	0.0%	15,000	2.1%	0.0%
澎湖市	100,000	2.3%	0.0%	15,000	2.1%	0.0%
金門市	100,000	2.3%	0.0%	15,000	2.1%	0.0%



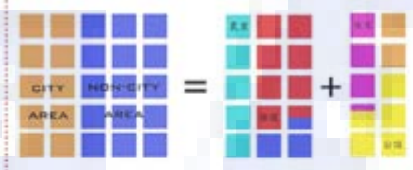
農業人口下降4309787-3688885=620902人  
農業面積下跌723452-624215=99237公頃  
大約為彰化縣土地面積

population of agriculture decrease 4309787-3688885=620902  
area of agriculture decrease 723452-624215=99237hectare  
about the size of zhang-hua county

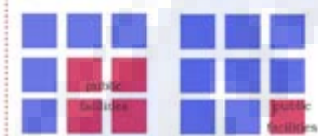
advise professor : Chang Chi-Yi



urban area in taiwan is only 12% of taiwan land, and 78% of taiwan population live in urban area.



non-city area mainly consist of agriculture and protected area. city area mainly consist of residential area and public facilities

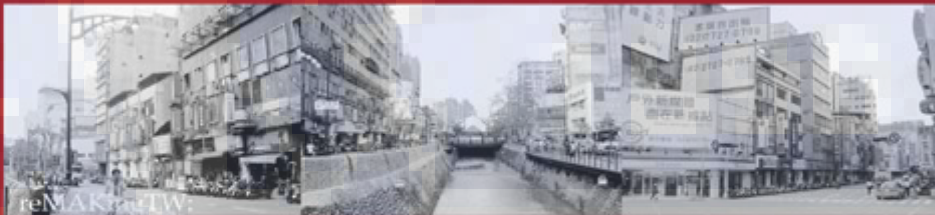


even the density of population in urban and non-urban area is so different from each other, they both share the same proportion of public facilities

the same small....



DESIGN STUDIOS first year



by re-examing the condition of TAIWAN industrial and economic,we try to reprogram the old disused empty house of TAICHUNG city in to an new open space for city such as park,sport field,parking place, pulic facility.... and on the other hand,yhe county call MIAOLI is facing a totally different situation,the wasted farms can only be recover into the nature,by multiprogram the system of water,highway,biogeocenosis,



Taichung City:

reprogram/mix-used/3D planning of empty houses

because of the extreme situation of empty houses

in Taichung, Empty houses have become a huge waste of city space

in such small island like Taiwan.

but empty houses can be reprogram

by inserting all kinds of public place, park, sport court.....

so a empty house will be not just a empty house.

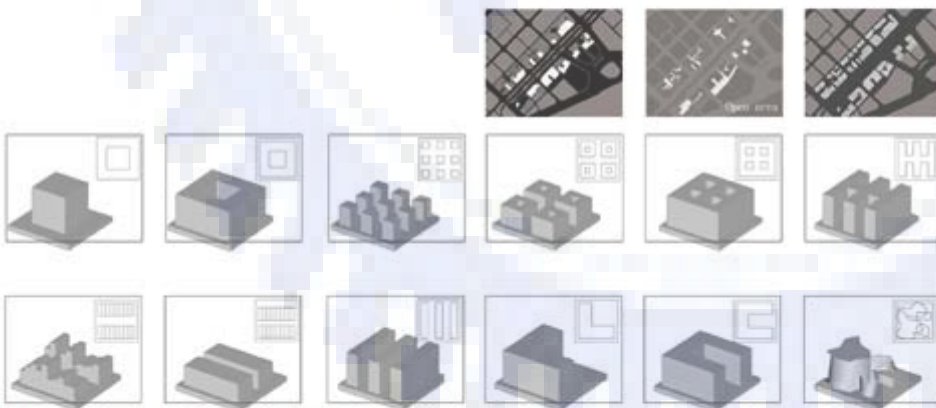
advise professor : Chang Chi-Yi



elevation of empty houses



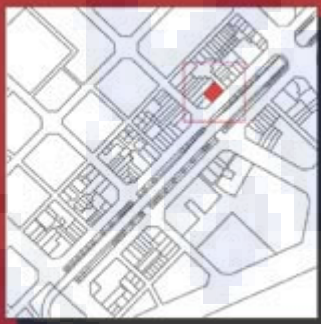
empty houses — homes of plant







DESIGN STUDIOS first year



by re-examing the condition of TAIWAN industrial and economic, we try to reprogram the old disused empty house of TAICHUNG city in to an new open space for city such as park, sport field, parking place, public facility... and on the other hand yhe county call MIAOLI is facing a totally different situation, the wasted farms can only be recover into the nature, by multi program the system of water, highway, biogeocenosis.

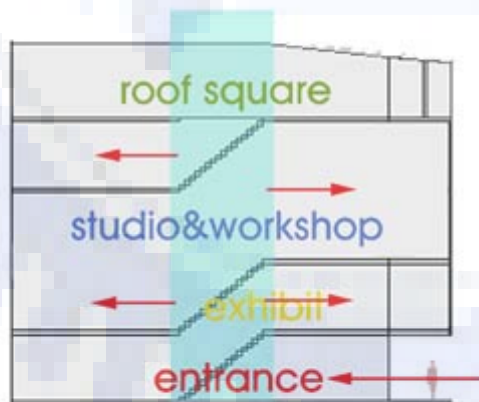
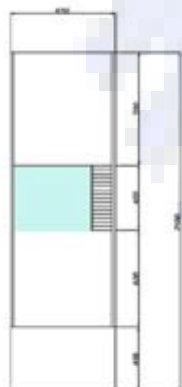
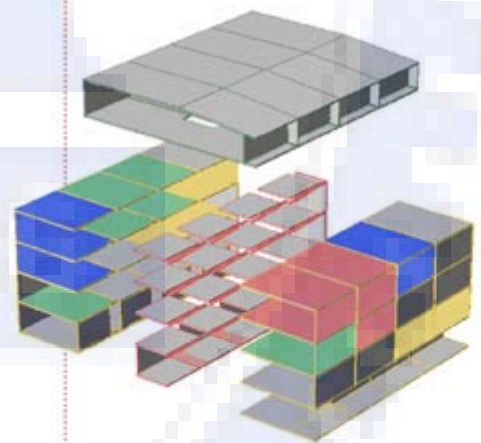




advise professor : Chang Chi-Yi

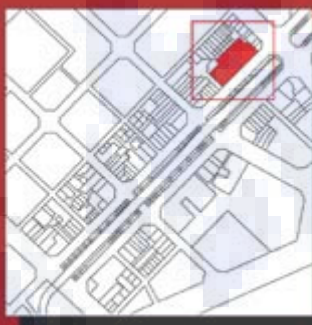
### type1:Street House

using the existing stair way bring in the road system into the building, opening 1 floor and rooftop to connect outside and inside world, the original residential space was divide into two parts which can be reprogram in different use...





DESIGN STUDIOS first year



by re-examing the condition of TAIWAN industrial and economic, we try to reprogram the old disused empty house of TAICHUNG city in to an new open space for city such as park, sport field, parking place, public facility ... and on the other hand yne county call MIAOLI is facing a totally different situation, the wasted farms can only be recover into the nature, by multiprogram the system of water, highway, biogeocenosis.



advise professor : Chang Chi-Yi

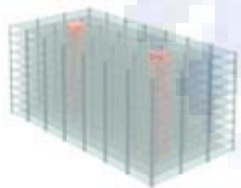
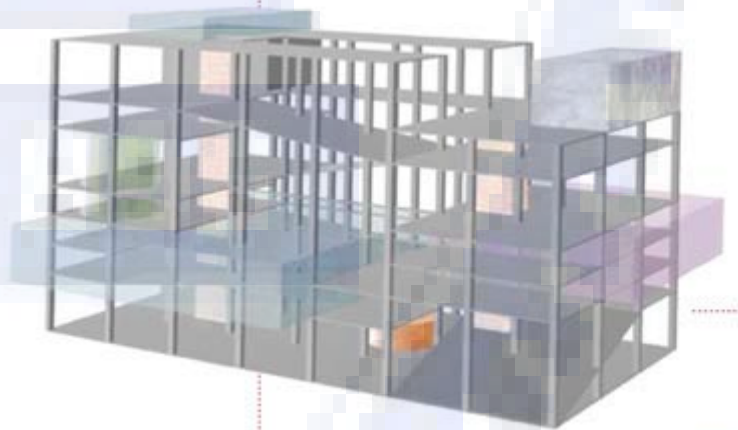
### type2:massive residence

take off some floors and walls to makes  
pace open to public access.

1 floor can be a entrance square,

2~4 floor can be a parking area to replace  
the street parking.

3D street in the center of building can  
lead people to public facilities.



basketball



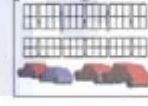
gorff



tennis



parking

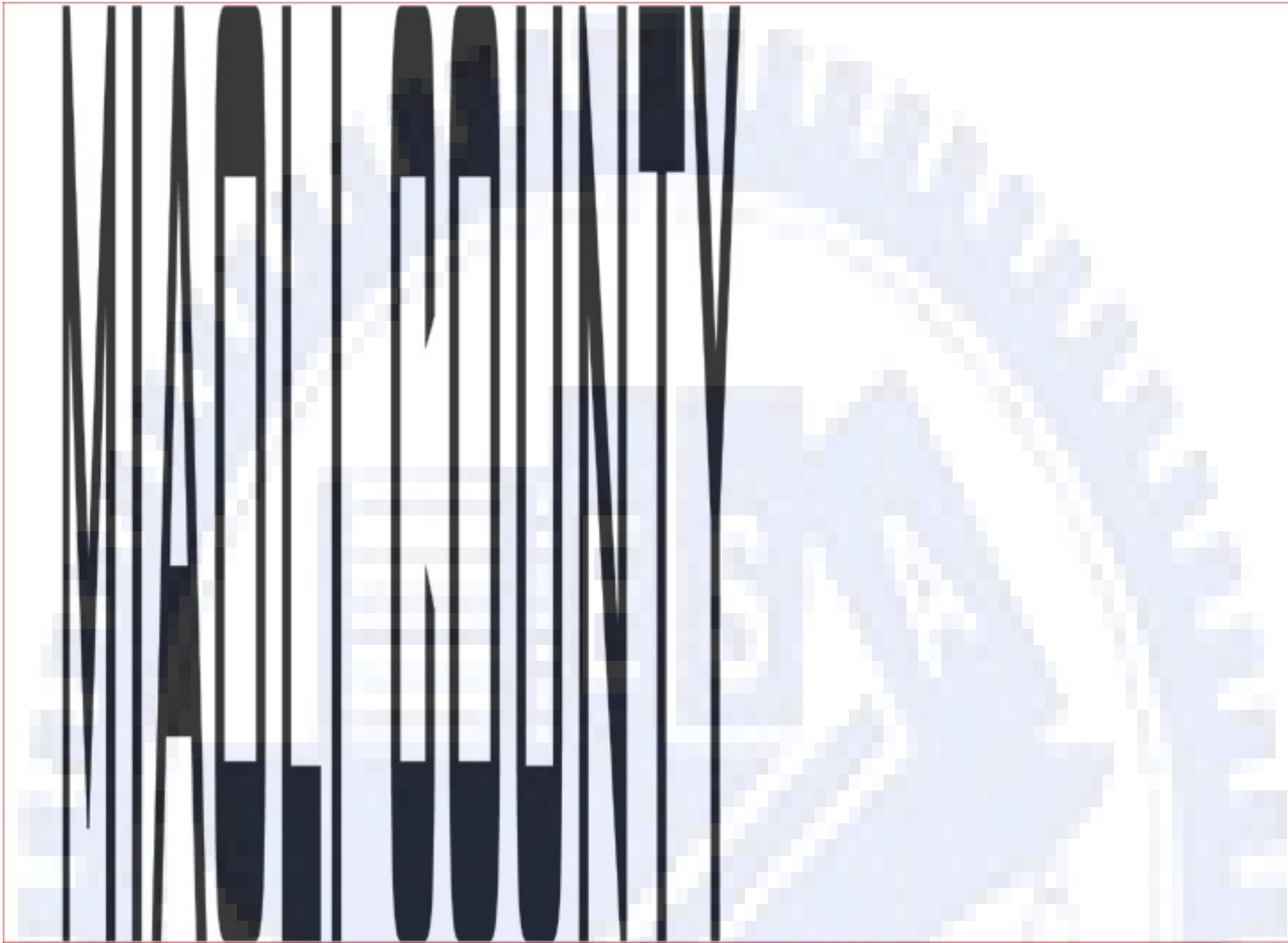


skateboard



toilet





DESIGN STUDIOS first year

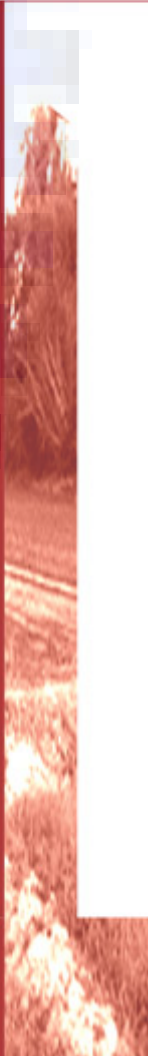


reMAKingTW:

by re-examing the condition of TAIWAN industrial and economic,we try to raprogram the old disused empty house of TAICHUNG city in to an new open space for city such as park,sport field,parking place, pulic facility... and on the other hand,yhe county call MIAOLI is facing a totally different situation,the wasted farms can only be recover into the nature.by multiprogram the system of water,highway,biogeocenosis.



reMAKing TW \_disused farms





advise professor : Chang Chi-Yi

