



portfolio

content

competition

library_station P25

mimic_library(with liu yueh hua) P30

solar_station(with chan hou min) P34

..Chang Chung-yi.....



Competition for FEIDAD Award



Concept >>>

_This is a project involve with future technology,a new possible architecture material we would like to call "mimic glass",can display different image according to different user (now are more familiar with the name "OLED"), if it can also carry the function of information searching and recording (such as electronic paper), could it replace the book of future if so,what is the meaning of books and libraris ?

_Could library? be liberate?

_As information and technology evolve,the old type of library packed with books and bookshelves will be replaced.the library of new age should be more related to people's everyday life,such as transportation system.

_So the main idea of this project is to combine the library and railroad station together,become a symbiosis system.

single component composition

nature

information

architecture structure

"mimic" panel — carry different function and purpose



advise professor : Leslie Shin



for information access



distance learning



web meeting

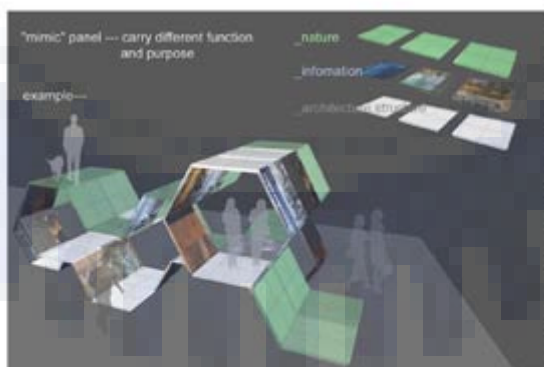
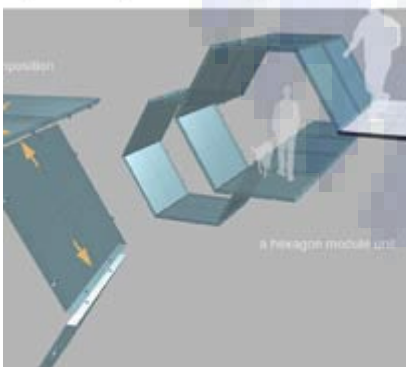


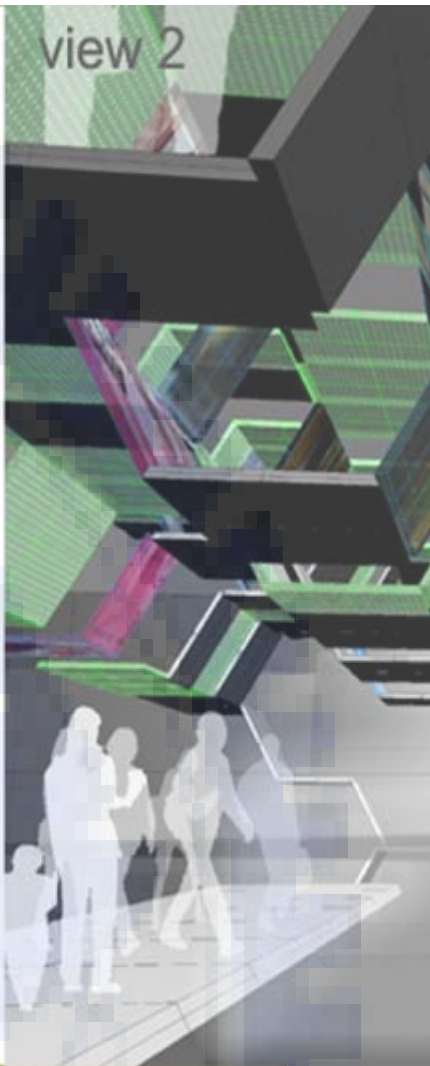
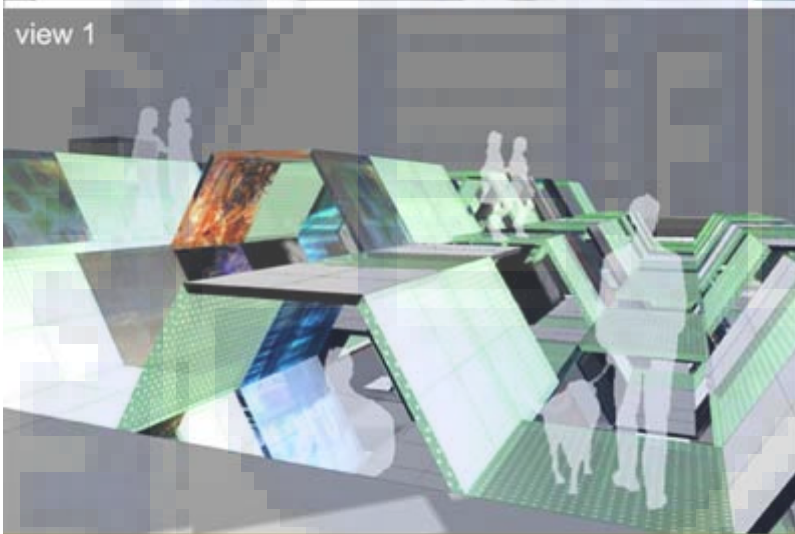
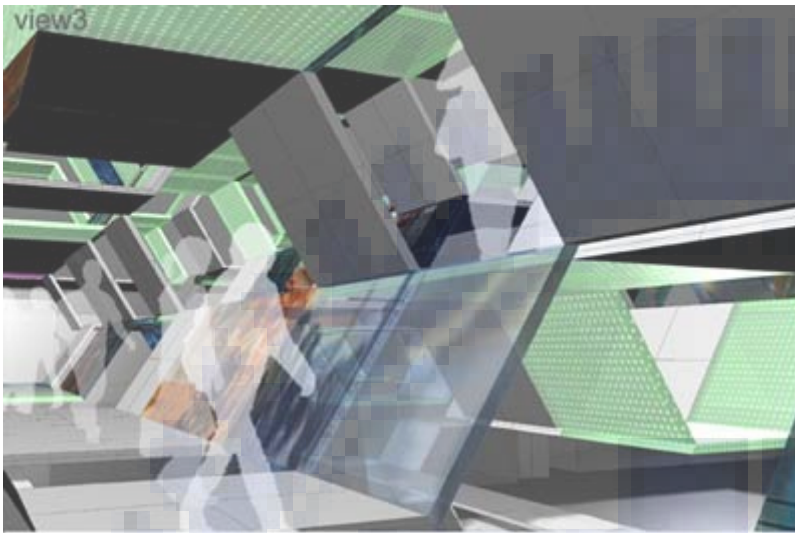
exhibition



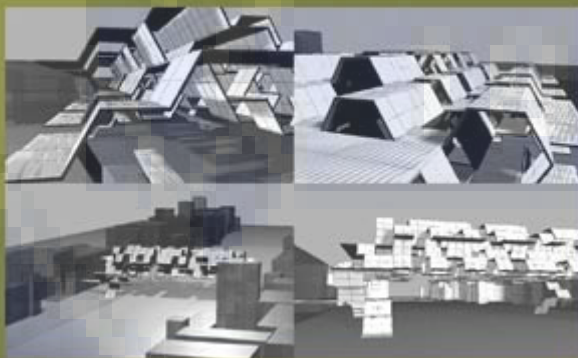
Component & module unit >>>

- _Using single component to create a adjustable ,movable, space module.
- _“Mimic panel” brings in mix-program of space ,
- _The function of library will be no longer fixed,but varied.
- _Flexible space boundary,can change throught time and need





Competition for FEIDAD Award

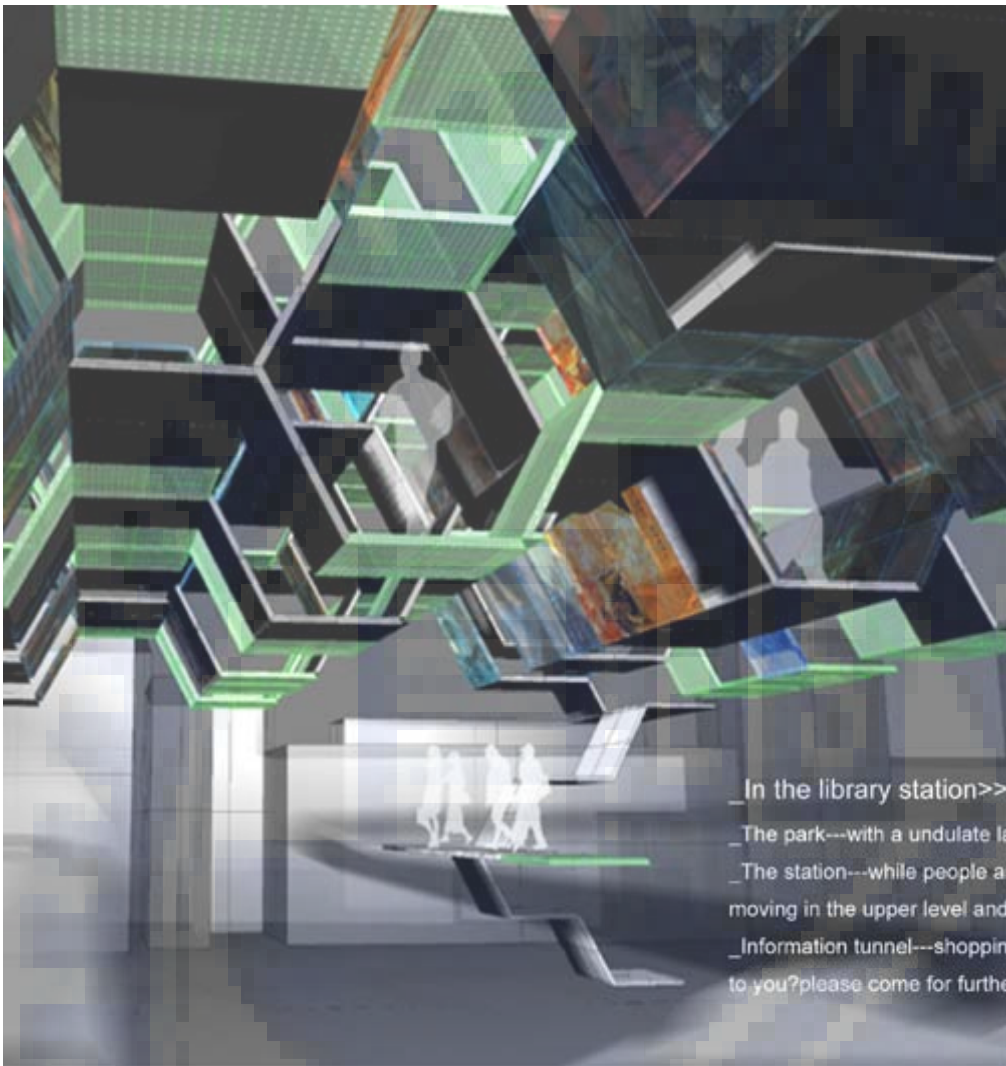


Site conditions >>>

The site is located at Hsinchu city center, with the main traffic line and future light rail line crossing, carrying the biggest people flow in the city.
 The main traffic road is very wide and speedy, almost too long and dangerous for people to walk through, and the original skybridge became unattractive for pedestrians, so I remaking it into a library station and combine with different function, like park, information space, etc.



Library_Station



In the library station>>

The park---with a undulate landscape,form a new cityscape.

The station---while people are waiting for the train,he/she can watch the people moving in the upper level and the information flow,or a personal information cocoon.

Information tunnel---shopping while you are walking,what is the information attract to you?please come for further more...

advise professor : Leslie Shin

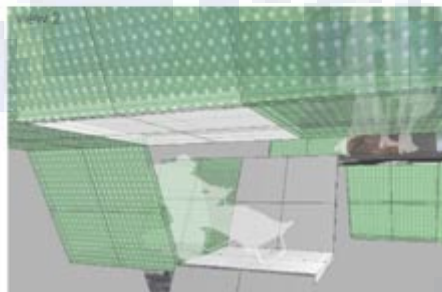


Unit detail >>

As people passing in the unit, the different path will lead they to meet in certain point,maybe a park view,or a altitude ramp.

The adjustable module creat some personal space,for leisure or information used.

The tunnel look information space change the reading behavior,not siting in fornt of a desk,but more like shopping,shopping for information.

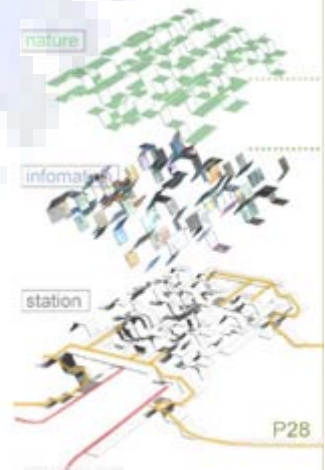


Composed by previous unit module and mimic panel,the station has three different layer---nature , information ,and station system.

Beside the main three route of station for acrossing through the road, all the other components are movable and adjustable.



Diagram of light railway



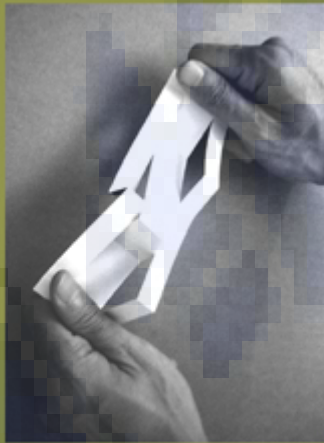
PARK---on the upper level of building, provide a quick access to nature for people in the city center.

INFORMATION---as people passing through the station tunnel, ha/she can shopping for information on the "mimic panel" or stay in the personal information space.

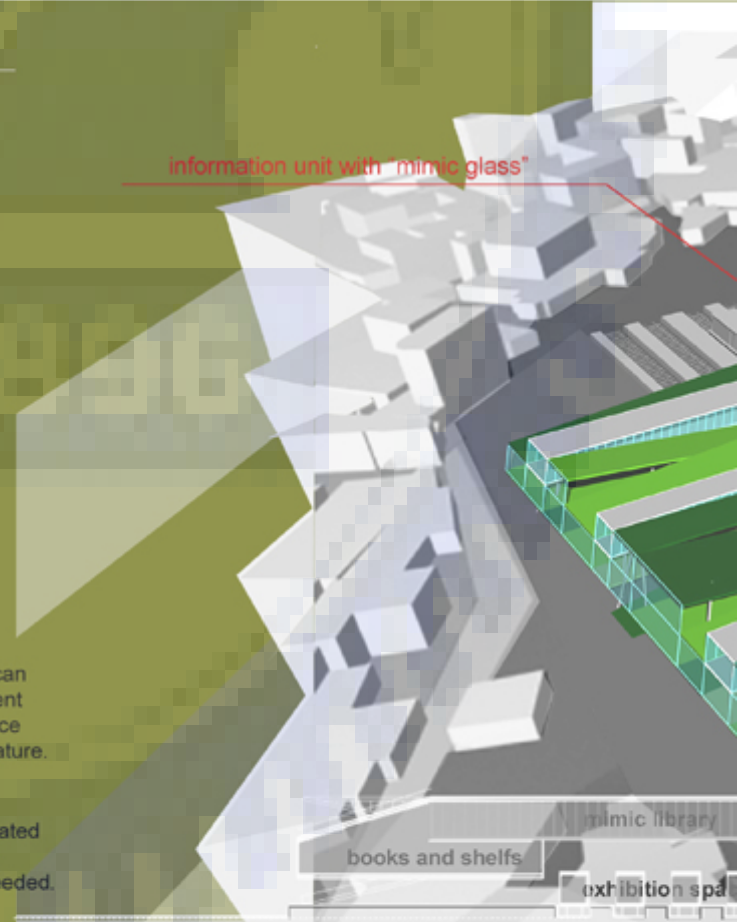
LIGHT RAILWAY STATION---under the building massive,people will waiting for train in the platform.



Competition for JA central glass design



information unit with "mimic glass"



Mimic_Library

"Mimic glass"

With the help of new technology, a glass wall now can change its pattern and information display in different time and different user. Reform the information space and reading behavior, also bring reader closer to nature.

"Adjustable space module"

The movable mimic glass component can be fabricated in diverse size and form. So the library units will be able to fit for various community programs when needed.

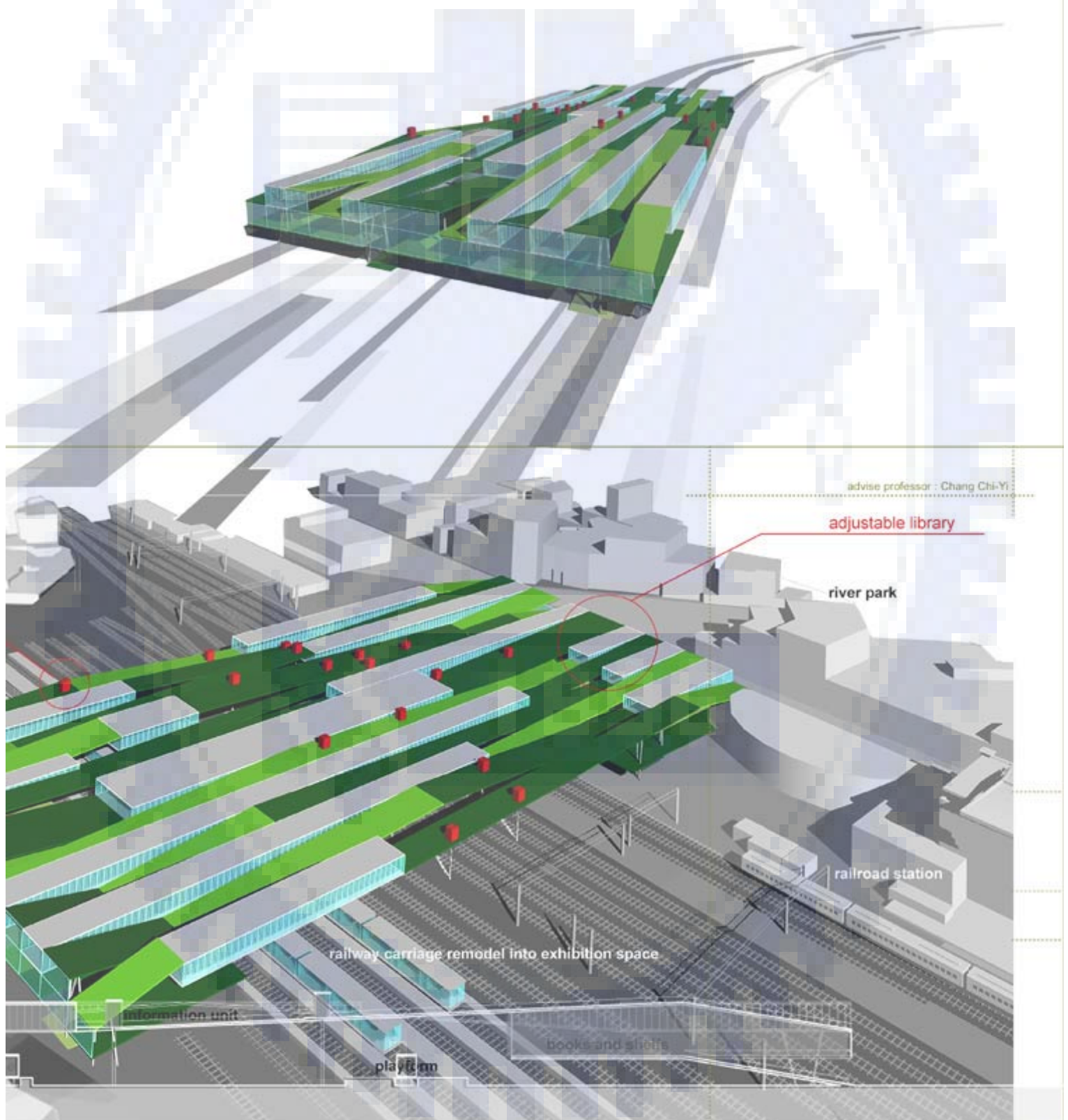
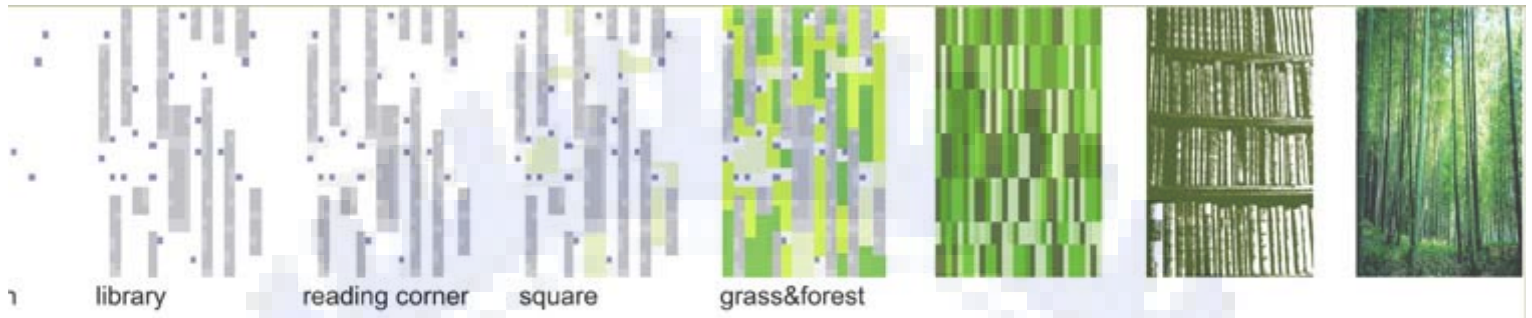
You can exercise both your body and mind on this undulate landscape. Our site is next to the railroad station in city center. We hope the library is a easeful place for citizens to close to.

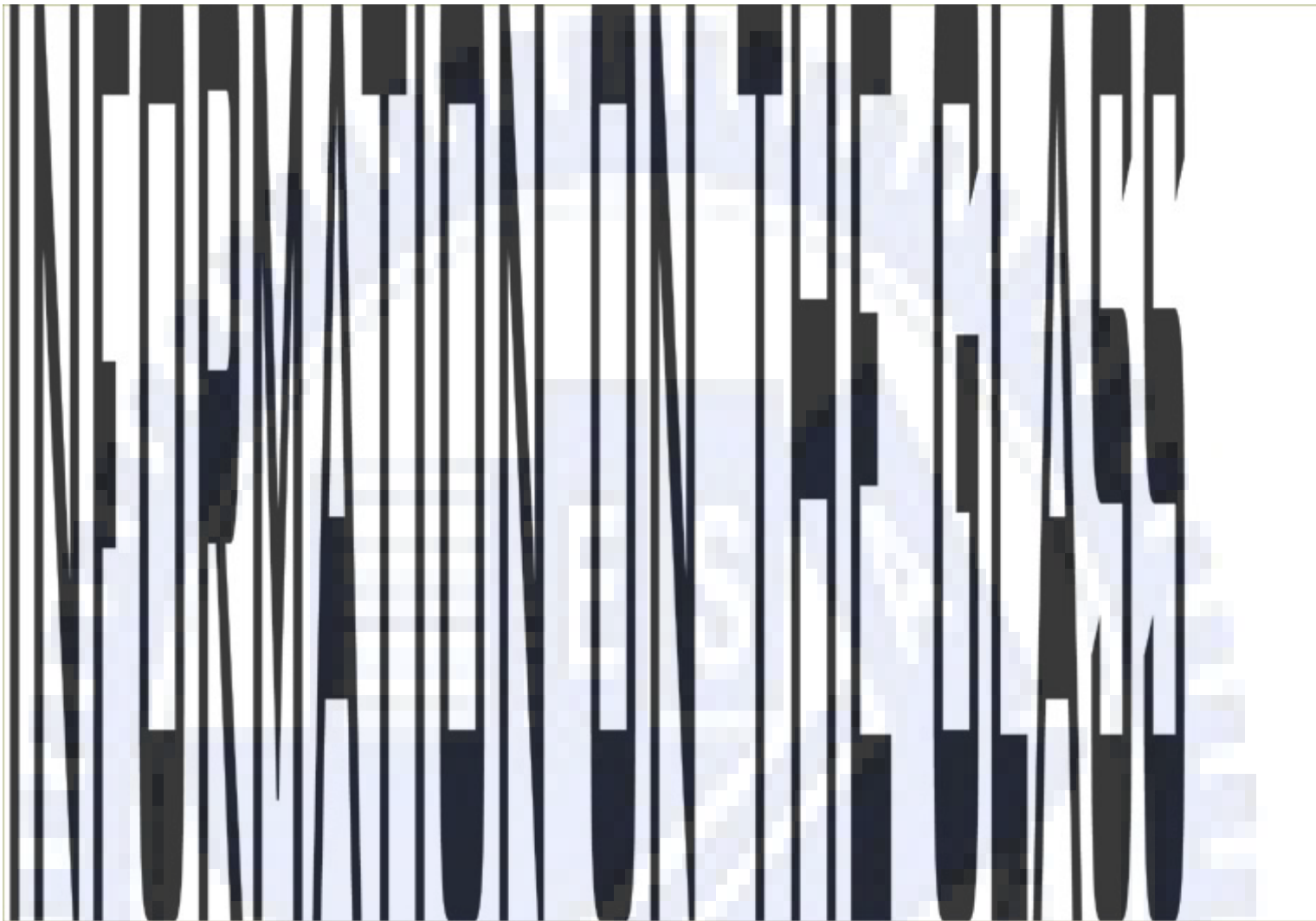
books and shelves

mimic library

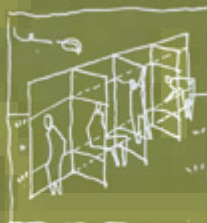
exhibition spa

chang chung yi & liu yueh hua





Competition for JA central glass design



movable component & various program

"Mimic glass"

With the help of new technology, a glass wall now can change its pattern and information display in different time and different user. Reform the information space and reading behavior, also bring reader closer to nature.

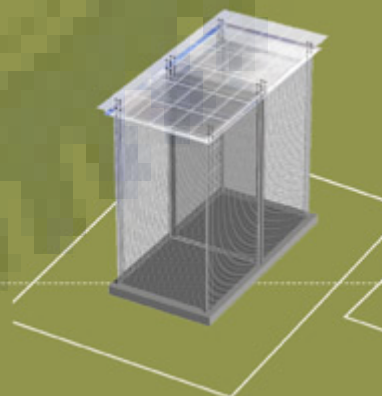
"Adjustable space module"

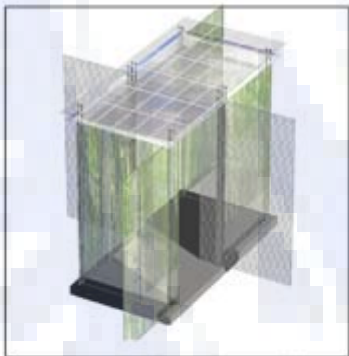
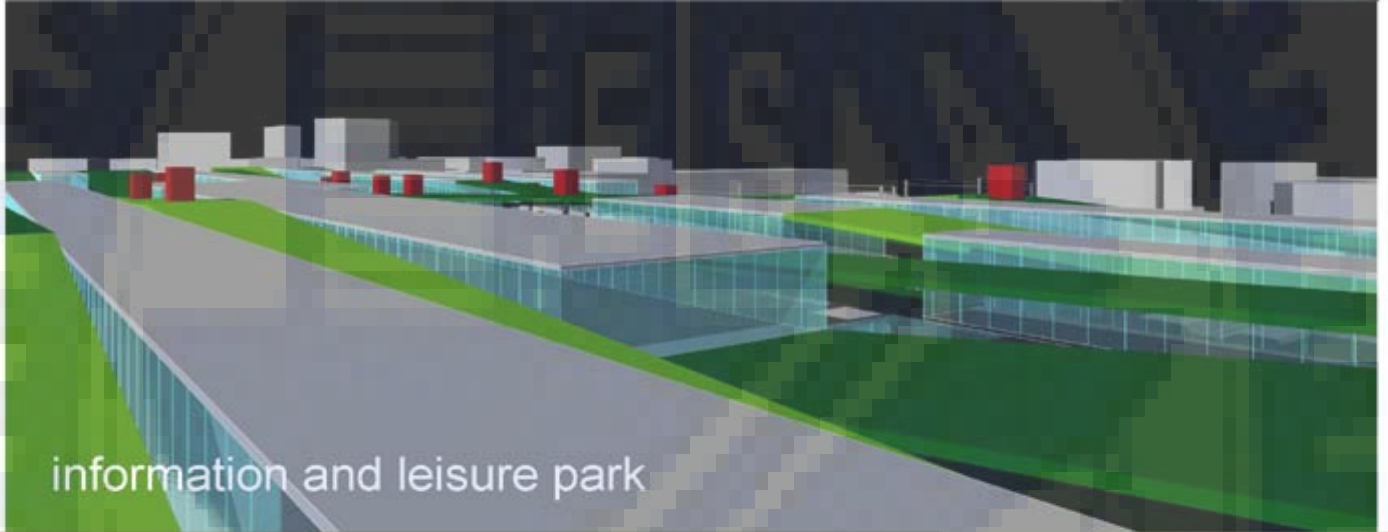
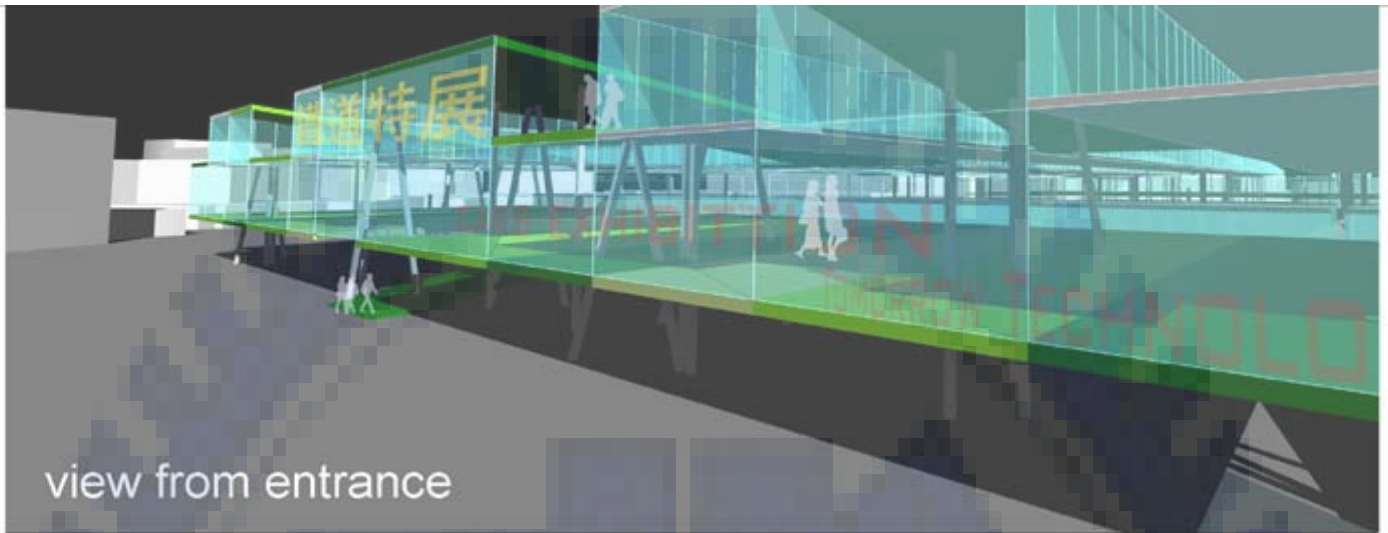
The movable mimic glass component can be fabricated in diverse size and form. So the library units will be able to fit for various community programs when needed.

You can exercise both your body and mind on this undulate landscape. Our site is next to the railroad station in city center. We hope the library is a easeful place for citizens to close to.



basic type

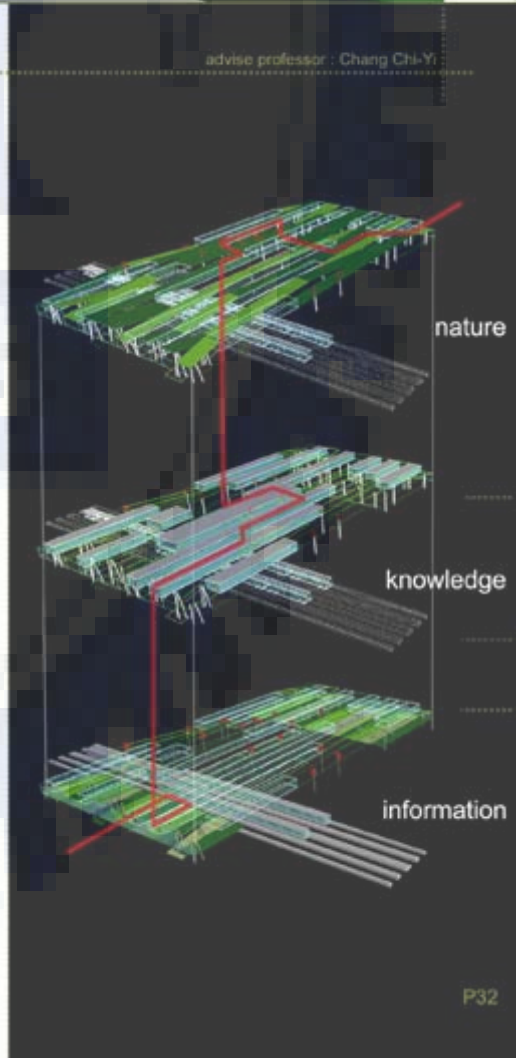
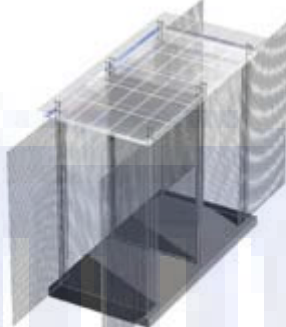




move mimic glass (1)



move mimic glass (2)



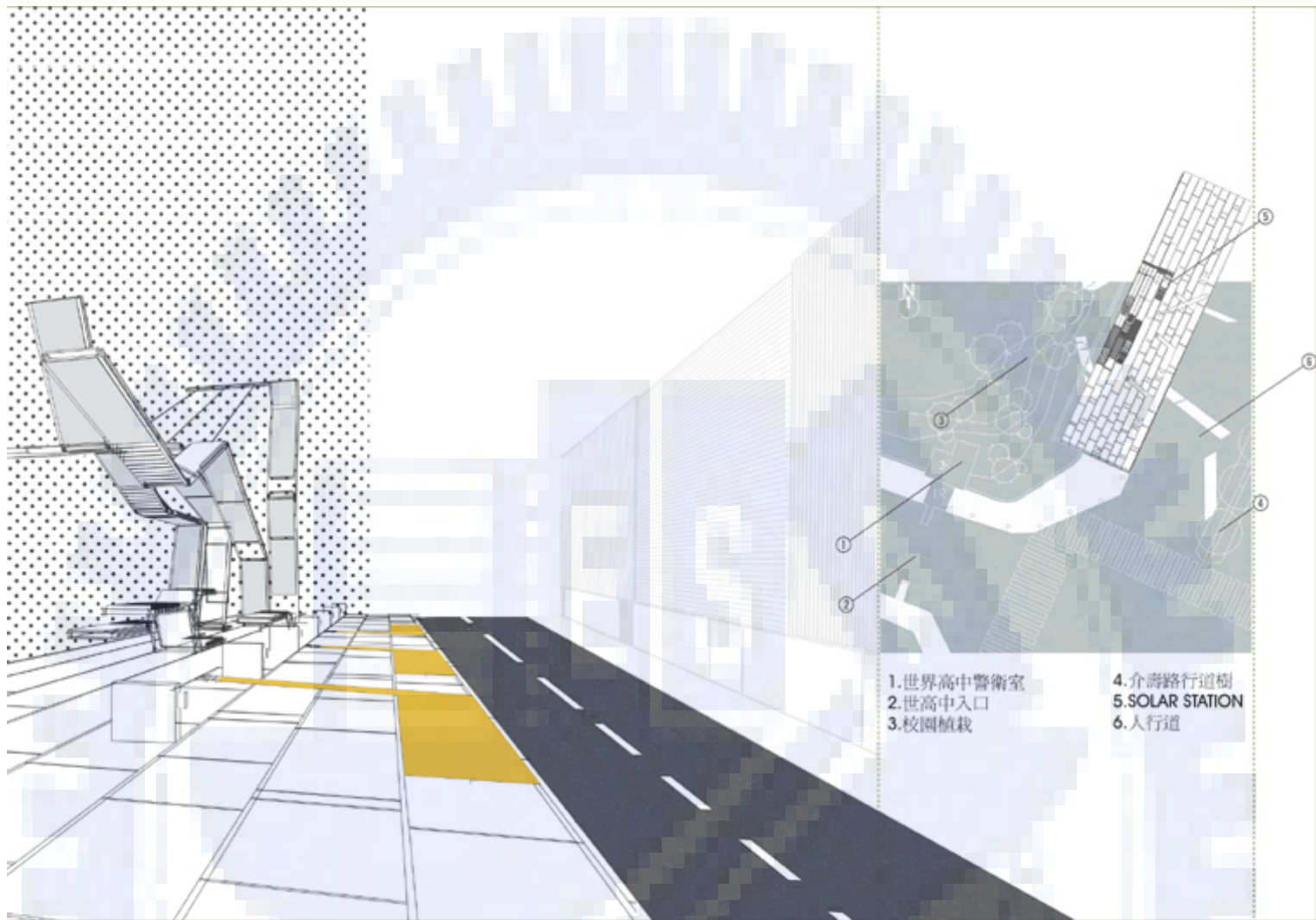


Competition for Solar architecture design 2004 _second price



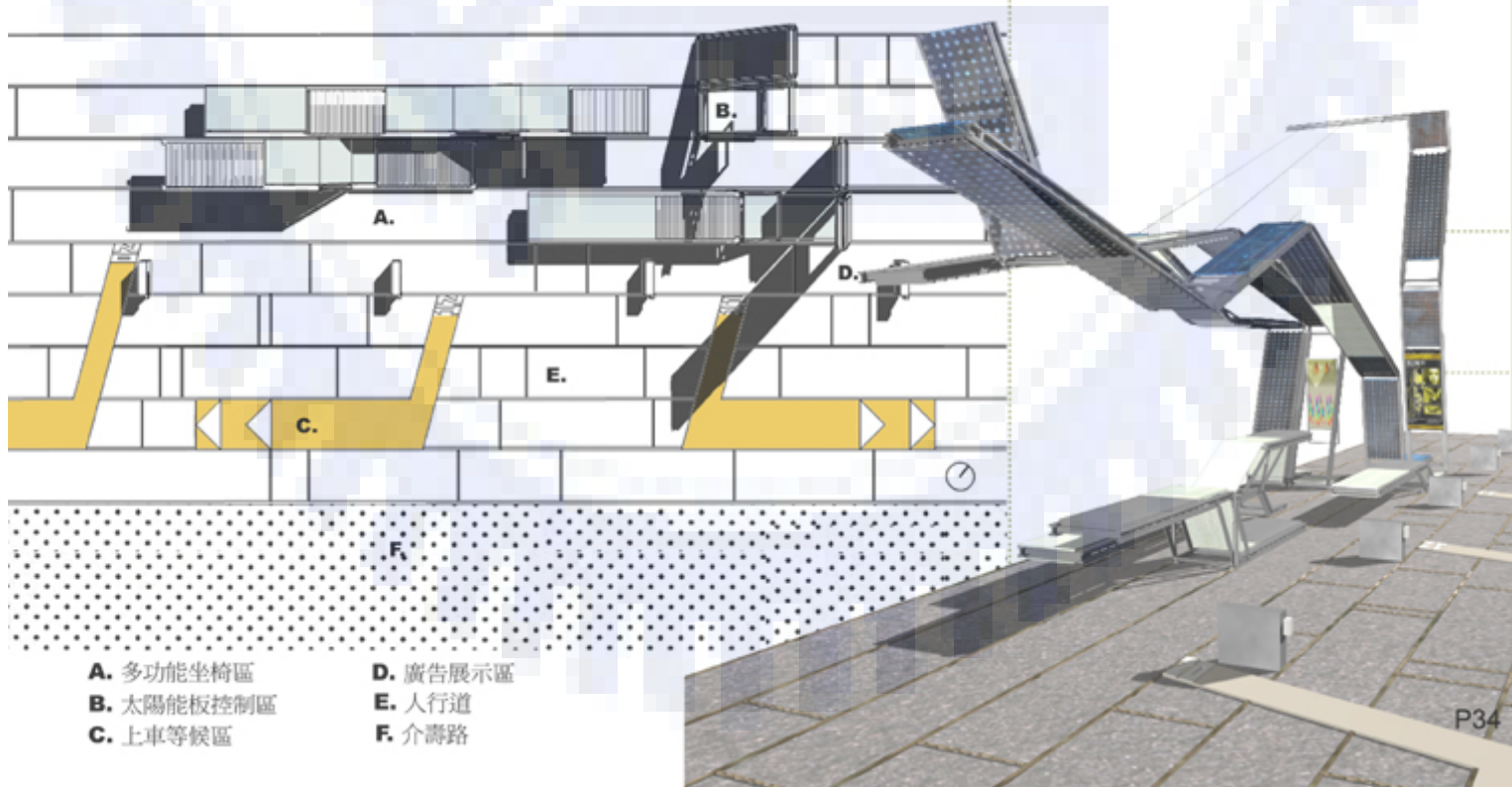
Solar_Station

前言：
太陽能的運用在台灣的建築設計上並不廣泛，而大多數的台灣人對太陽能的原理完全不了解，故常發生使用上的錯誤以致於對太陽能有著貴又不好用的偏見，然而，推廣太陽能是一件長遠的工作，應在民眾日常生活能接觸的地方讓市民認識太陽能和其運作的原理，才能讓大家產生珍惜這份環保的能源的共識。

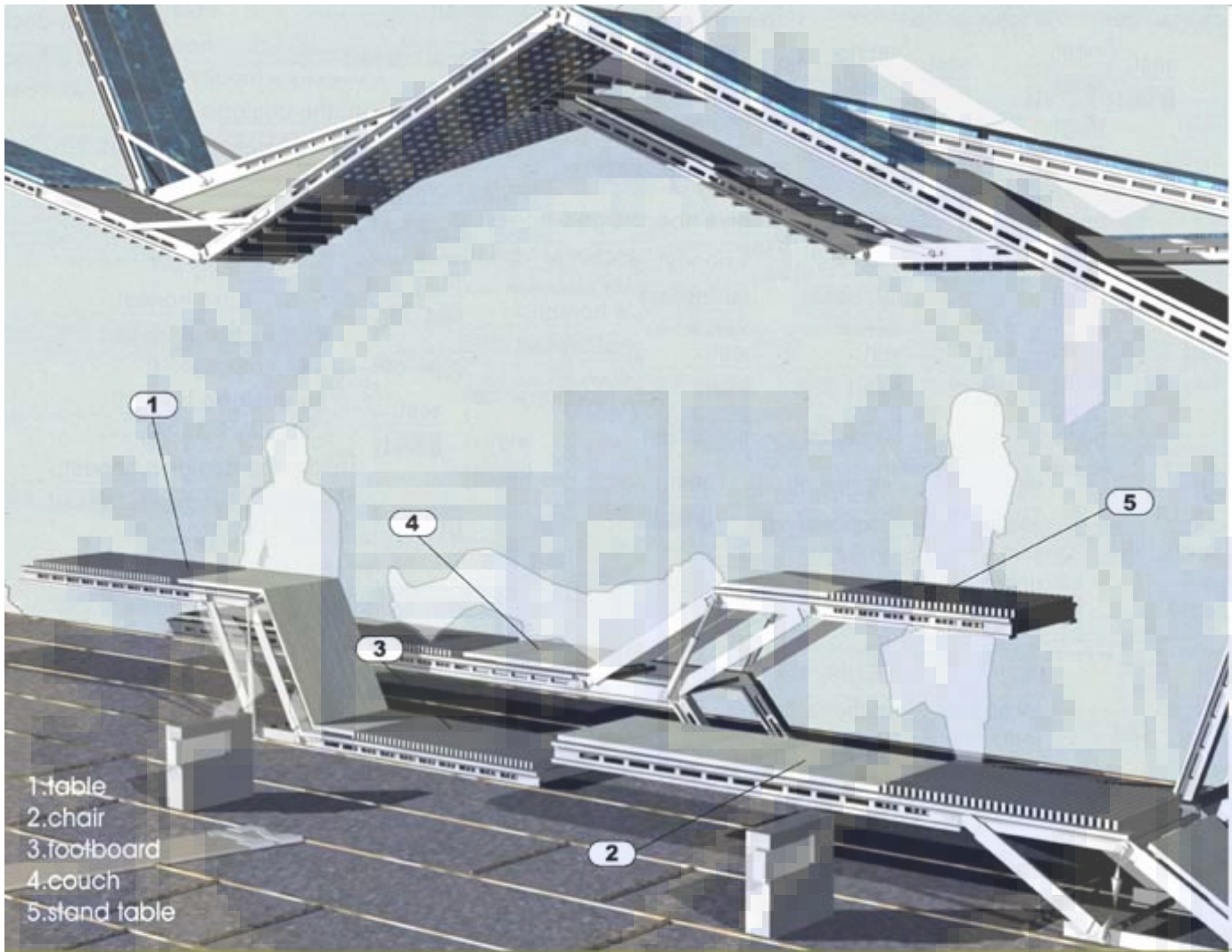


- 1. 世界高中警衛室
- 2. 世高中入口
- 3. 校園植栽
- 4. 介壽路行道樹
- 5. SOLAR STATION
- 6. 人行道

本地位於新竹市介壽路世界實驗中學入口的人行道上,做為一個學校的入口意象,不應是一個單純的雕塑品,而是一個讓學生和市民在每天生活上都能接觸到的裝置,結合了候車亭的機能與雕塑品的藝術感,並且配合人行道的鋪面分割,將學校的入口整合成一個更實用的空間。



- A. 多功能坐椅區
- B. 太陽能板控制區
- C. 上車等候區
- D. 廣告展示區
- E. 人行道
- F. 介壽路



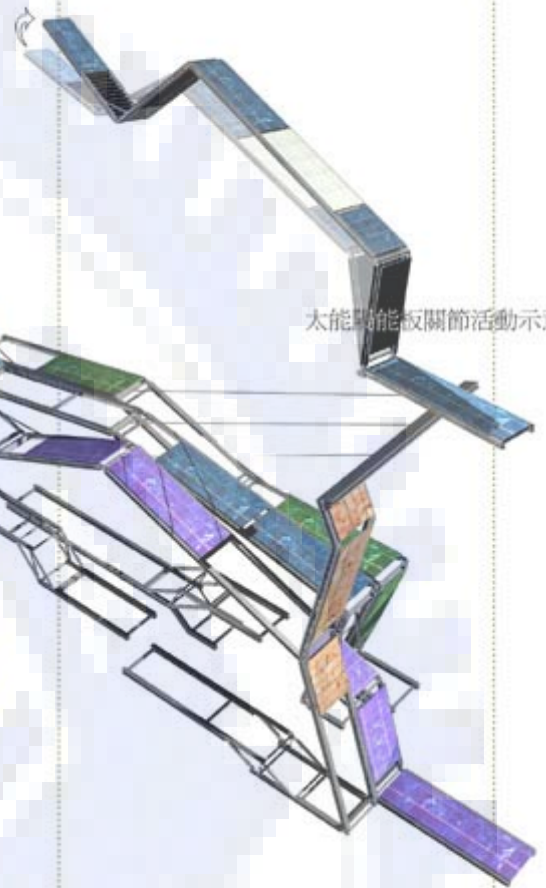
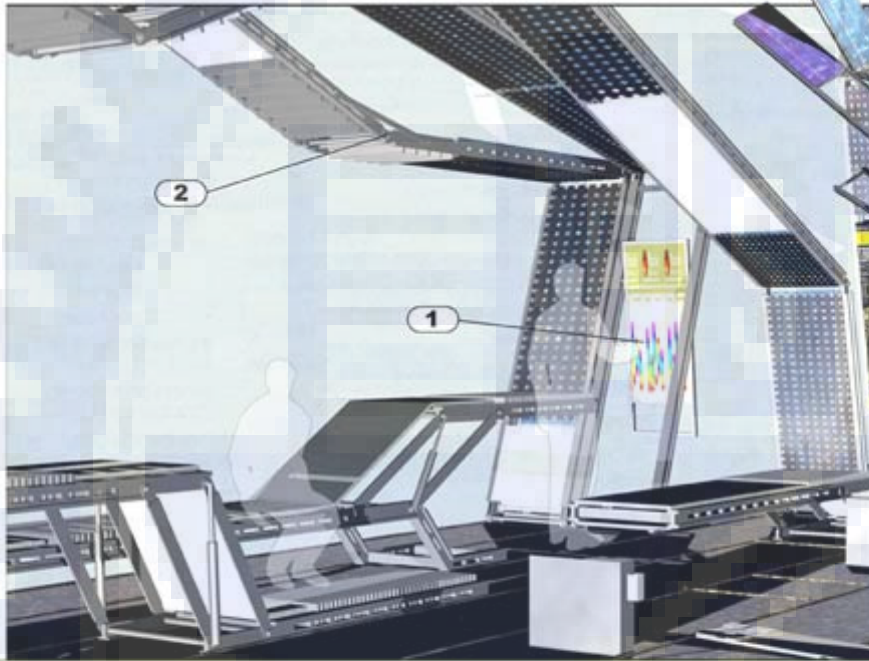
- 1.table
- 2.chair
- 3.footboard
- 4.couch
- 5.stand table

Competition for Solar architecture design 2004 _second price

Solar_Station



利用路燈，校園圍籬和景觀鋪面，把校園的入口意象和都市作一整合處理。
路燈以樹木為意象，圍籬以草，與校園外側的綠帶作一呼應；鋪面則連接校園入口與都市的方向性



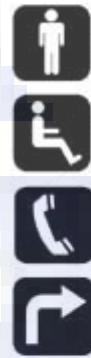
太陽能面板關節活動示意

- 1. I 型鋼骨
- 2. 展示板
- 4. 光電板
- 5. 夜間照明板
- 6. 板裝格柵
- 7. 車輪關節

CONSTRUCTION DETAIL



考慮到組裝和運送的問題,將結構體與光電板一同設計成可組可拆的方式,共且統一尺寸上的規格,降低生產成本,平衡光電板高價位。



當人們在等車或休息的時候,多功能的坐椅可以調整出適合各種活動的高度,或坐或站,甚至躺著,都隨你高興。



UP UP I stand table



UP I table or couch

